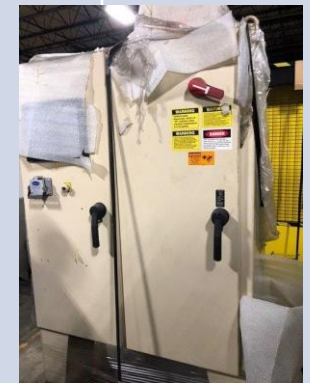




FOR SALE 500 TON IDRA/PRINCE REMANUFACTURED

500 Ton Idra was Remanufactured by Die Cast Press
in 2017 and never put into service

Ref no	1108
Nominal locking Tonnage	500
Distance between tie bars	28" x 28"
Front platen dimensions	8 ¾" x 46" x 52"
Moving Platen Dimensions	7 ¾" x 46" x 46"
Rear Platen dimensions	8 ¾" x 46" x 46"
Tie bar Dia	5 ½"
Pump Motor	60 HP 480V, 1200RPM
Die thickness	Min 18" x Max 32"
Die stroke	14 ½"
Die open speed	1.9
Die close speed	1.4
Shot Stroke	10"
Shot Cylinder Dia	5 1.2" 3 ½" rod
Shot position	0-6" below center
Ejection Stroke	4"
Carriage stroke	12"
Hyd reservoir capacity	450 Gallons Approx..
Air requirements	8-10 SCFM
Machine size	16'5" x 13'6" x 13'6"
Dry Machine weight	55,000 Lbs.



Die Cast Press Mfg Co., Inc

56480 Kasper Drive Paw Paw MI 49079

Phone 269-657-6060 Fax 269-657-9302

For More Information Call Ken Smith or

Email ken@diecastpress.com